

JHB497freebie



Thank you for downloading this freebie. I am sure you will enjoy making a set of these for yourself or even as gifts.

This is a fun coaster for you to play with.

For this coaster you will need

fabric for the top of the coaster
fabric for the lining of the coaster
compressed or quilters batting
scraps for the leaves to applique with
water soluble vilene or cut away stabilizer
threads of your choice – your satin stitch outline colour you need to match your bobbin thread to the top thread

Hoop up with your preferred stabilizer and thread up your machine with your satin stitch outline colour, matching your top and bobbin thread
Stitch the first colour line directly on your stabilizer. This is an outline of where your batting and fabrics are going to go.

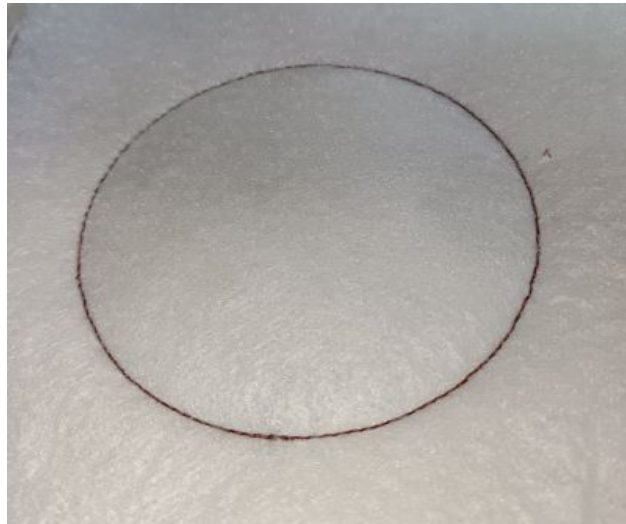


2

Float your batting over this outline, exceeding the outline by at least ½ inch (1 cm) all around.



Lightly holding your batting in place so that it does not move or bubble and secure the batting with the next colour line, which is a double run stitch line.



Remove hoop from the machine, but not the design out of the hoop and cut away the excess batting close to the run stitch line.



Next up you are going to add your top fabric over the design area, again exceeding the outline by at least ½ inch (1 cm). You can pin this in place from the top of the hoop outside the stitching area or

3

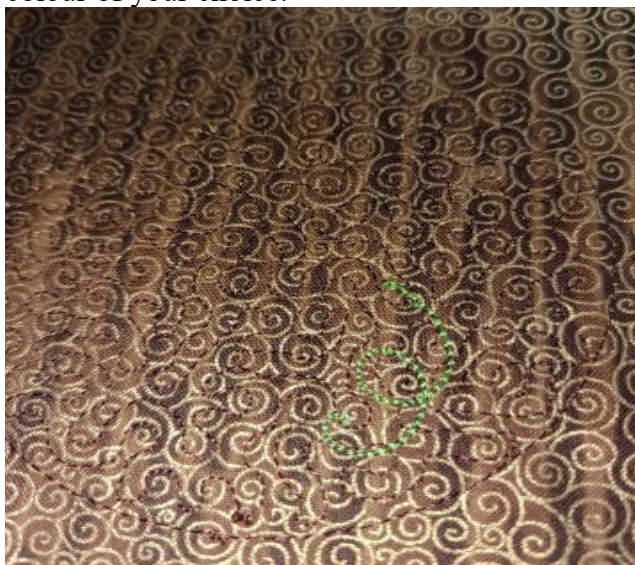
you can lightly hold the fabric in place so that the fabric does not move or bubble. This is a single run stitch line. DO NOT cut away any excess fabric at this stage.



Stitch the inside quilting detail in the colour of your choice.



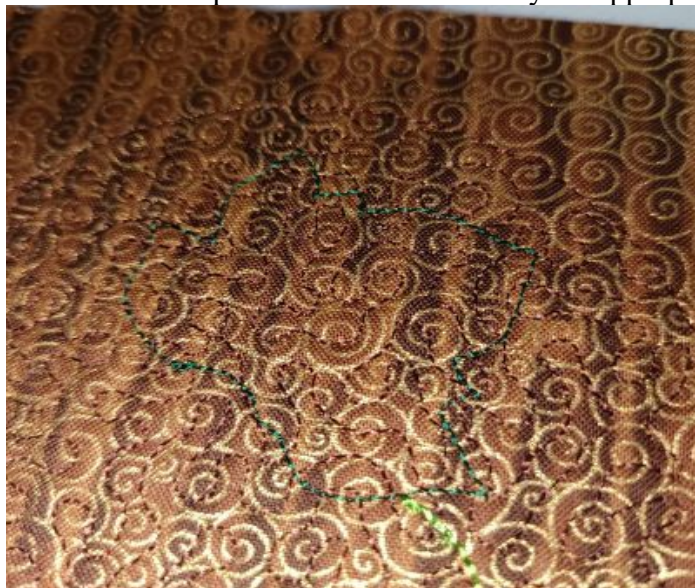
Stitch the curl line in the colour of your choice.



Next up you are going to do the applique leave so thread up your machine in the colour you are going to do your satin stitch outline of the leave in.

4

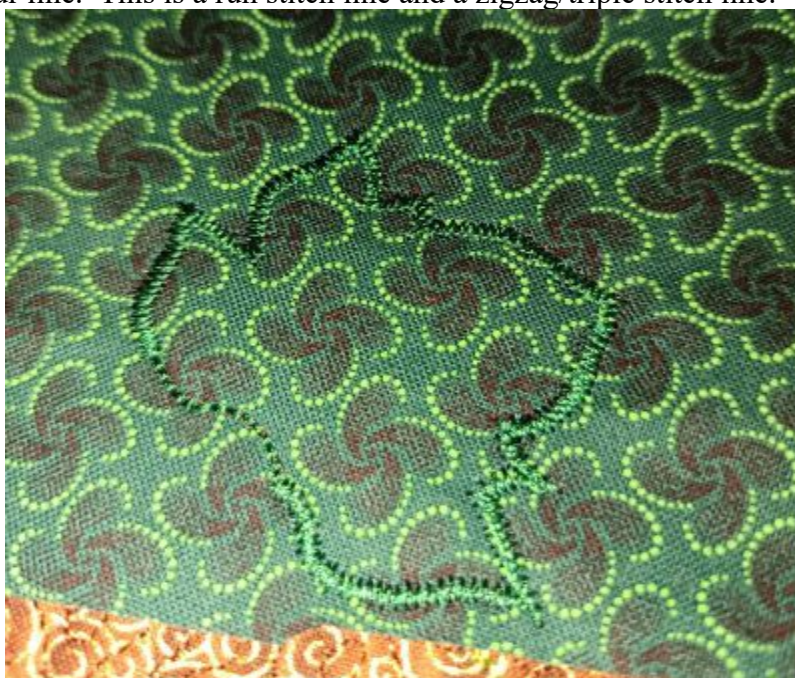
Stitch the next colour line which is the placement line of where your applique fabric is going to go.



Float your applique fabric over this outline, exceeding the outline all around by at least ½ inch (1 cm).



Lightly holding your fabric in place so that it does not move or bubble, secure your applique fabric with the next colour line. This is a run stitch line and a zigzag/triple stitch line.



5

Remove hoop from the machine, but not the design out of the hoop, and cut away the excess applique fabric close to the zigzag/triple stitch line.



Stitch the inside leave detail in the colour of your choice. I did mine in the same colour as my satin stitch outline colour.

Then stitch the next colour line, which is the satin stitch outline around the leave in your satin stitch outline colour.



Next up stitch your grapes in the colour of your choice.



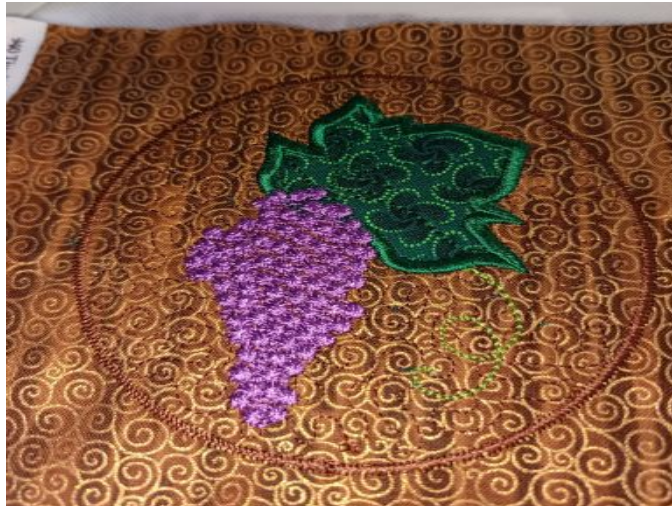
Once you have completed the inside detail, thread up your machine again with your satin stitch outline colour around the design, matching your top and bobbin thread.

6

Add your lining fabric underneath the hoop, right side facing away from the hoop. You can pin this in place from the top of the hoop outside the stitching area.



Carefully place the hoop back on the machine and stitch the next colour line, which is a run stitch line and a zigzag line.



Remove hoop from the machine but not the design out of the hoop, and cut away the excess fabric close to the zigzag line on top of the hoop as well as underneath the hoop.



7

Place hoop back on the machine and stitch the last colour line.



Carefully cut design out of the stabilizer. Wash out the stabilizer, dry flat. Once dry lightly press on the reverse and you are ready to use your coaster.



Enjoy
Helena
JHB Creations